

Willoughby Plat No. 13

BEING A TRACT OF LAND LYING IN THE HANSON GRANT SITUATED IN MARTIN COUNTY, FLORIDA

JUNE, 1995

CLERK'S RECORDING CERTIFICATE

I, MARSHA STILLER, CLERK OF THE CIRCUIT COURT OF MARTIN COUNTY, FLORIDA, HEREBY CERTIFY THAT THIS PLAT WAS FILED FOR RECORD IN

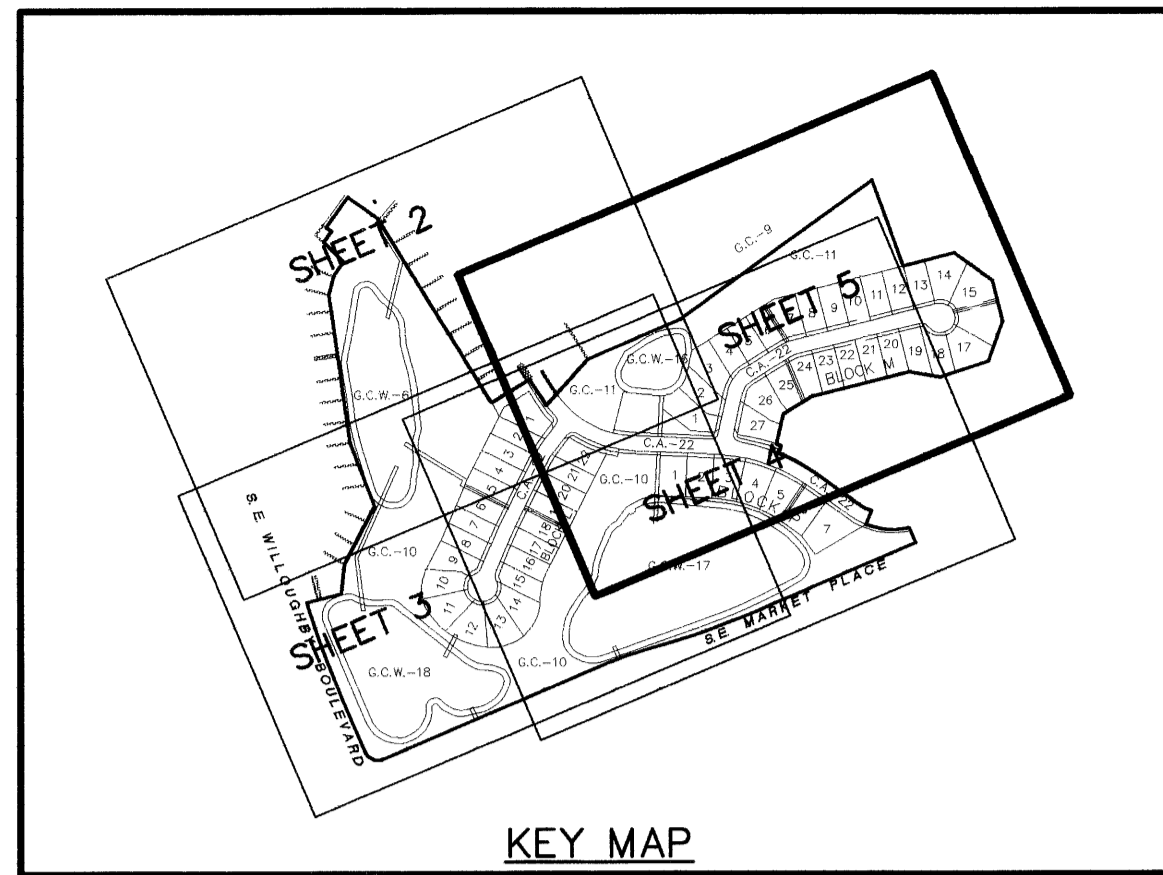
PLAT BOOK 13, PAGE 89,
MARTIN COUNTY, FLORIDA, PUBLIC RECORDS THIS
29th DAY OF August, 1995

MARSHA STILLER, CLERK OF THE CIRCUIT COURT
MARTIN COUNTY, FLORIDA.

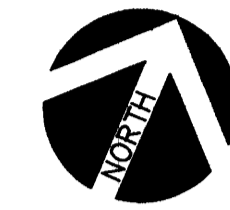
FILE NUMBER 113331 BY DEPUTY CLERK

39-38-41-013-000-0000.0

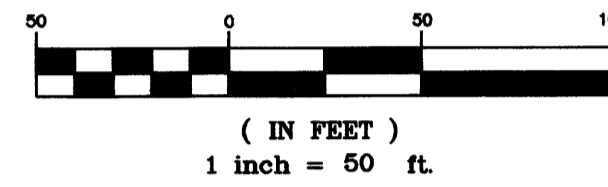
SUBDIVISION PARCEL CONTROL NO.



KEY MAP



GRAPHIC SCALE



WILLOUGHBY PLAT NO. 12
PLAT BOOK 13, PAGE 41
(MARTIN COUNTY)

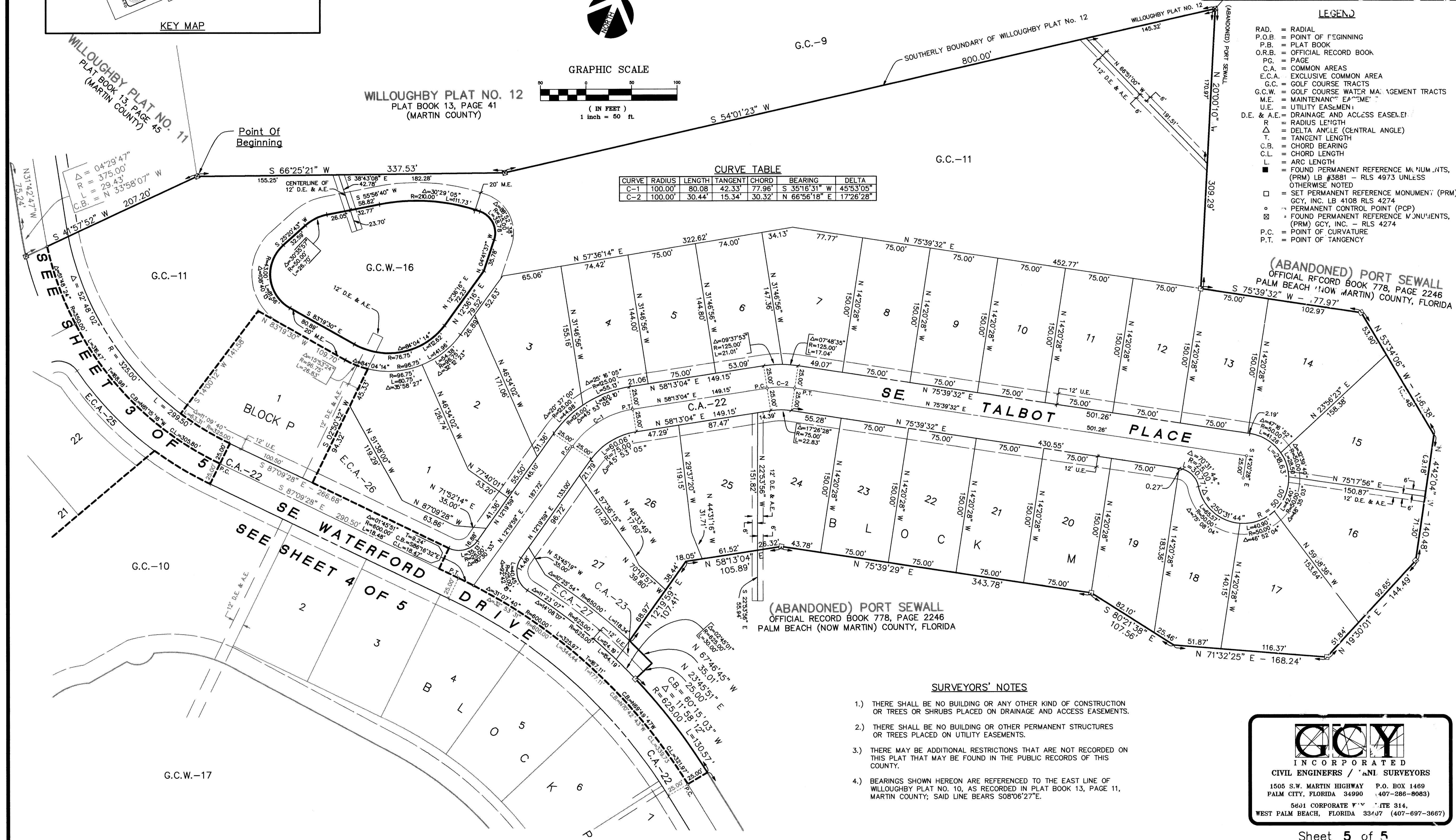
CURVE TABLE

CURVE	RADIUS	LENGTH	TANGENT	CHORD	BEARING	DELTA
C-1	100.00'	80.08'	42.33'	77.96'	S 35°16'31" W	45°53'05"
C-2	100.00'	30.44'	15.34'	30.32'	N 66°56'18" E	17°26'28"

LEGEND

- RAD. = RADIAL
- P.O.B. = POINT OF BEGINNING
- P.B. = PLAT BOOK
- O.R.B. = OFFICIAL RECORD BOOK
- PG. = PAGE
- C.A. = COMMON AREAS
- E.C.A. = EXCLUSIVE COMMON AREA
- G.C. = GOLF COURSE TRACTS
- G.C.W. = GOLF COURSE WATER MANAGEMENT TRACTS
- M.E. = MAINTENANCE EASEMENT
- U.E. = UTILITY EASEMENT
- D.E. & A.E. = DRAINAGE AND ACCESS EASEMENT
- R = RADIUS LENGTH
- Δ = DELTA ANGLE (CENTRAL ANGLE)
- T. = TANGENT LENGTH
- C.B. = CHORD BEARING
- C.L. = CHORD LENGTH
- L. = ARC LENGTH
- = FOUND PERMANENT REFERENCE MONUMENTS, (PRM) LB #3881 - RLS 4973 UNLESS OTHERWISE NOTED
- = SET PERMANENT REFERENCE MONUMENT (PRM) GCY, INC. LB 4108 RLS 4274
- = PERMANENT CONTROL POINT (PCP)
- ⊗ = FOUND PERMANENT REFERENCE MONUMENTS, (PRM) GCY, INC. - RLS 4274
- P.C. = POINT OF CURVATURE
- P.T. = POINT OF TANGENCY

(ABANDONED) PORT SEWELL
OFFICIAL RECORD BOOK 778, PAGE 2246
PALM BEACH (NOW MARTIN) COUNTY, FLORIDA



SURVEYORS' NOTES

- 1.) THERE SHALL BE NO BUILDING OR ANY OTHER KIND OF CONSTRUCTION OR TREES OR SHRUBS PLACED ON DRAINAGE AND ACCESS EASEMENTS.
- 2.) THERE SHALL BE NO BUILDING OR OTHER PERMANENT STRUCTURES OR TREES PLACED ON UTILITY EASEMENTS.
- 3.) THERE MAY BE ADDITIONAL RESTRICTIONS THAT ARE NOT RECORDED ON THIS PLAT THAT MAY BE FOUND IN THE PUBLIC RECORDS OF THIS COUNTY.
- 4.) BEARINGS SHOWN HEREON ARE REFERENCED TO THE EAST LINE OF WILLOUGHBY PLAT NO. 10, AS RECORDED IN PLAT BOOK 13, PAGE 11, MARTIN COUNTY; SAID LINE BEARS S08°06'27"E.

GCY
INCORPORATED
CIVIL ENGINEERS / SURVEYORS

1505 S.W. MARTIN HIGHWAY P.O. BOX 1469
PALM CITY, FLORIDA 34990 (407-286-8063)

5601 CORPORATE BLVD SUITE 314,
WEST PALM BEACH, FLORIDA 33407 (407-697-3667)